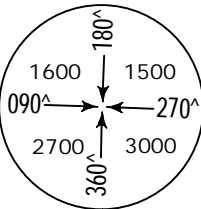
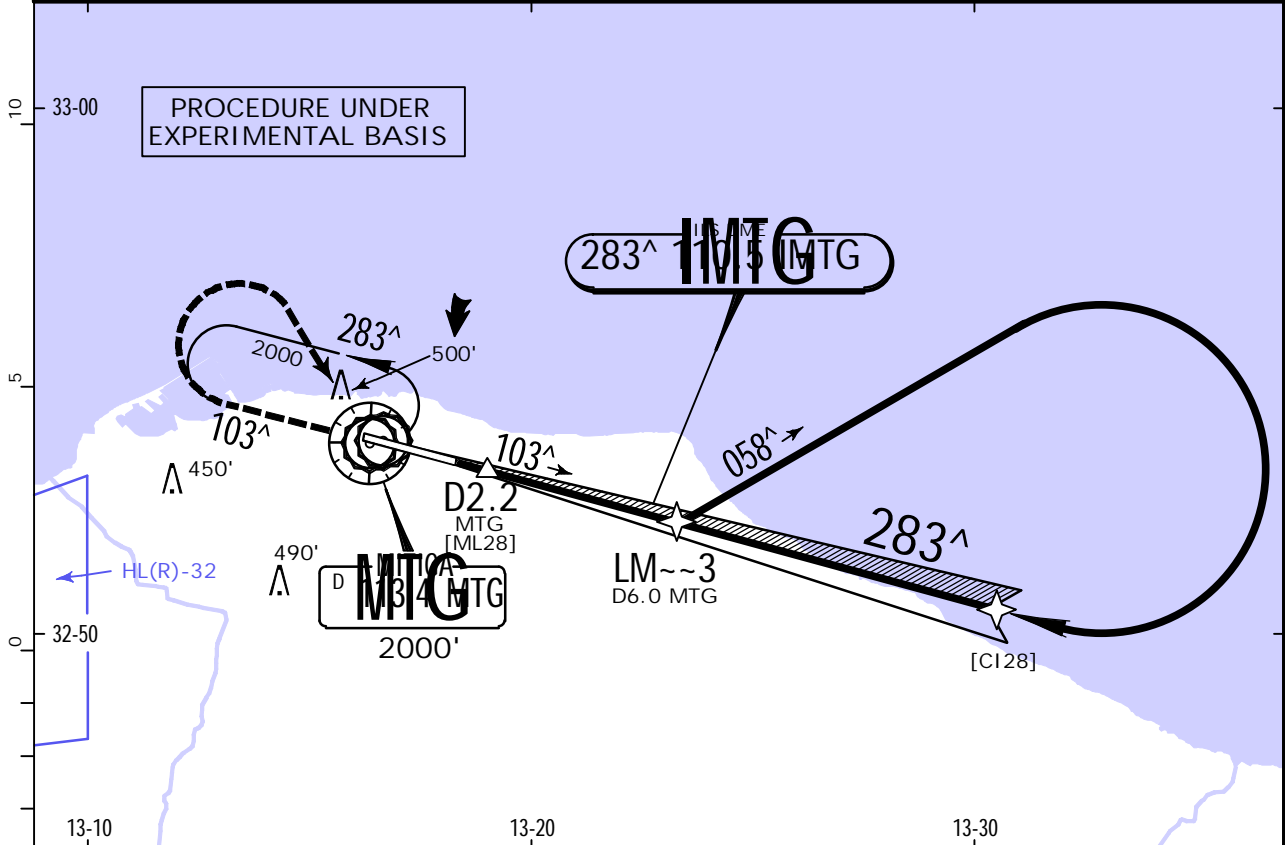


HLLM/MJI
MITIGA INTL

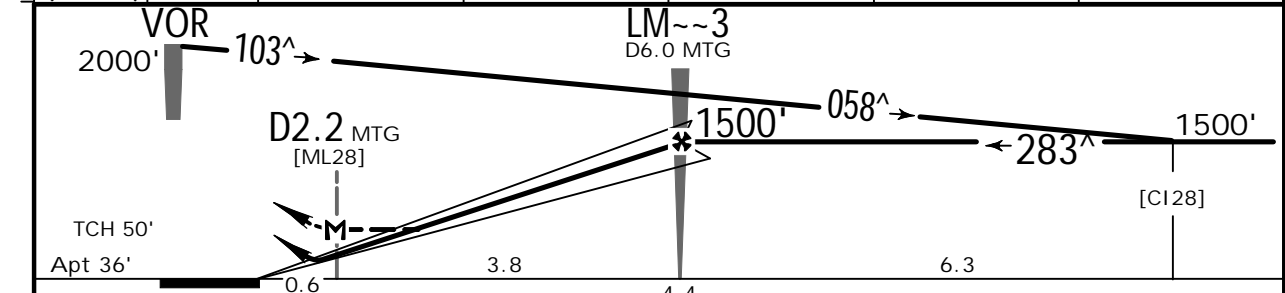
JEPPESSEN
29 SEP 23 (21-1) .Eff.5.Oct.

TRIPOLI, LIBYA
ILS or LOC Rwy 28

BRIEFING STRIP™	* ATIS 126.4		*MITIGA Approach 126.3		MITIGA Tower 126.3		* Ground 121.9	
	LOC IMTG 110.50	Final Apch Crs 283^	LMO~~3 1500' (1474')		ILS DA(H) 226' (200')	Apt Elev 30' Rwy 26'		
	MISSED APCH: Climb STRAIGHT AHEAD on 283^ until passing 1500'. Climbing turn RIGHT to join holding at 2000' or as directed.							
	Alt Set: hPa		Apt Elev: 1 hPa		Trans level: FL070		Trans alt: 5000'	



LOC (GS out)	IMTG DME	0.4	1.4	2.4	3.4	4.4
	ALTITUDE	174'	502'	830'	1158'	1485'



Gnd speed-Kts	70	90	100	120	140	160	ALS PAPI-L	1500'	283 [^]	113.4
ILS GS or LOC Descent Angle	3.10 [^]	384	494	548	658	768		↑		RT
MAP at D2.2 MTG										

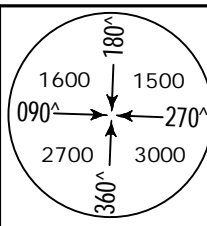
Std/State.		STRAIGHT-IN LANDING		LOC (GS out)		
ILS				CDFA		
DA(H) 226' (200')		1 DA/MDA(H) 340' (314')				
ALS out		ALS out				
A	R1200m			R1400m		
B						
C						
D						
1 VNAV DA(H) in lieu of MDA(H) depends on operator policy.						

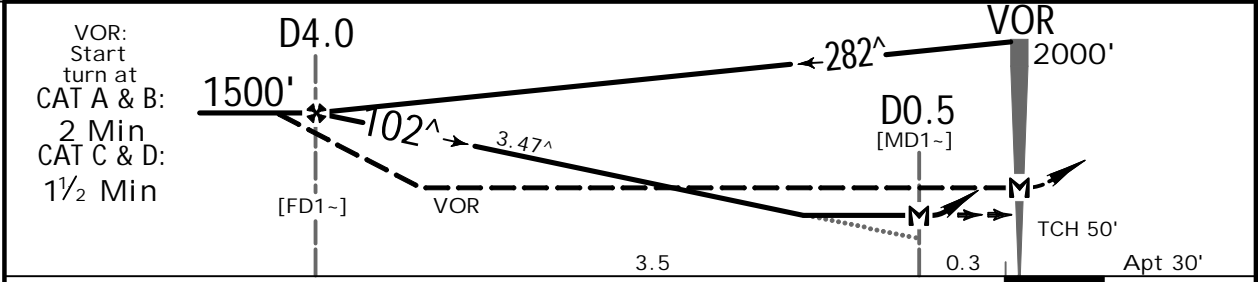
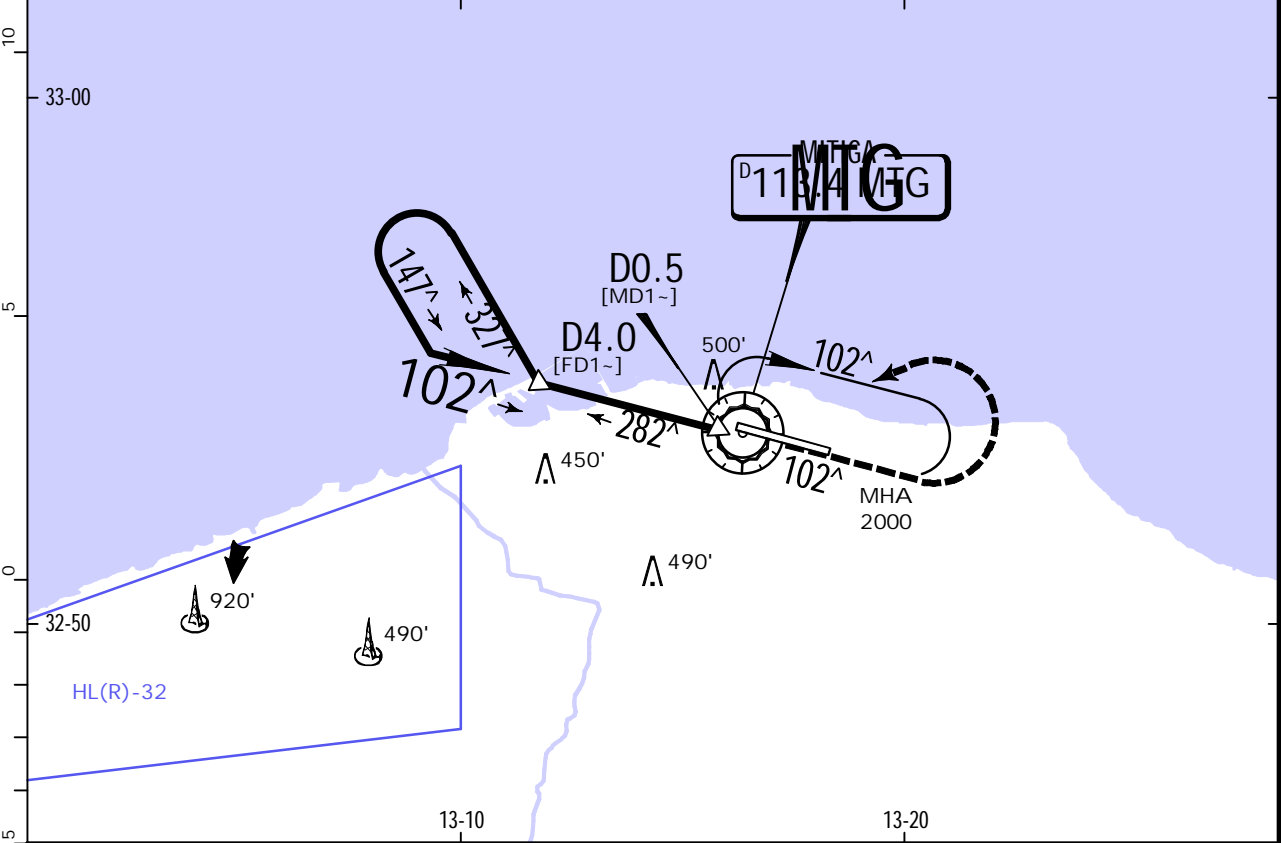
HLLM/MJI
MITIGA INTL

JEPPESSEN
29 SEP 23 **(23-1)** .Eff.5.Oct.

TRIPOLI, LIBYA
VOR DME Rwy 10

BRIEFING STRIP™

*ATIS 126.4		*MITIGA Approach 126.3		MITIGA Tower 126.3		*Ground 121.9	
VOR MTG 113.4	Final Apch Crs 102^	VOR DME D4.0 1500' (1470')	VOR DME MDA(H) 700' (670')	Apt Elev 30'			
		VOR No FAF	VOR MDA(H) 750' (720')				
		MISSED APCH: Climb STRAIGHT AHEAD to 1500', then climbing turn LEFT to 2000' direct to VOR and hold.					
Alt Set: hPa		Apt Elev: 1 hPa		Trans level: FL 70		Trans alt: 5000'	
Procedure restricted to MAX 210 KT.							



Gnd speed-Kts	70	90	100	120	140	160	ALS PAPI-L	1500'	2000'	MTG 113.4
VOR DME: Descent Angle	3.47^	430	553	614	737	860		↑	← LT	
VOR DME: MAP at D0.5										
VOR: MAP at VOR										

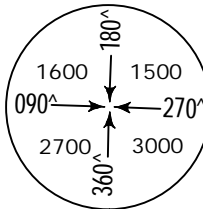
PANS OPS	Std/State.		STRAIGHT-IN LANDING		CIRCLE-TO-LAND	
	VOR DME CDFA 1 DA/MDA(H) 700' (670')		VOR CDFA 1 DA/MDA(H) 750' (720')		Not authorized South of airport	
	ALS out		ALS out		Max Kts	MDA(H)
	A R1500m		R1500m		100	1000' (970') V1500m
	B R1500m		R1500m		135	1000' (970') V1600m
	C R2400m		R2400m		180	1000' (970') V2400m
					205	1000' (970') V3600m

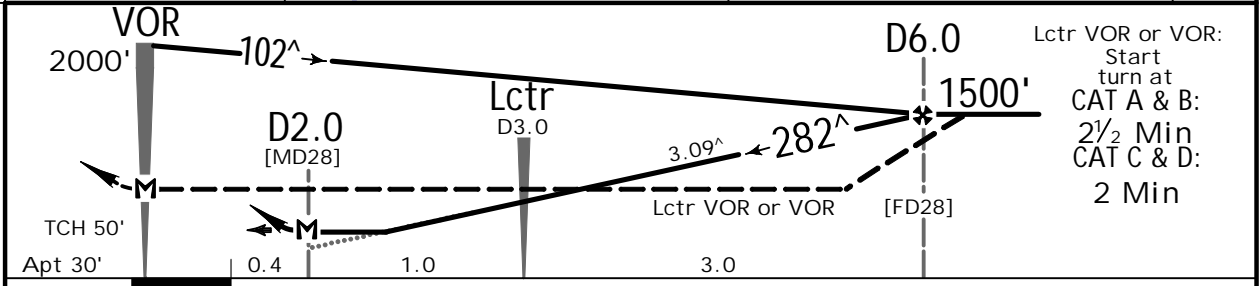
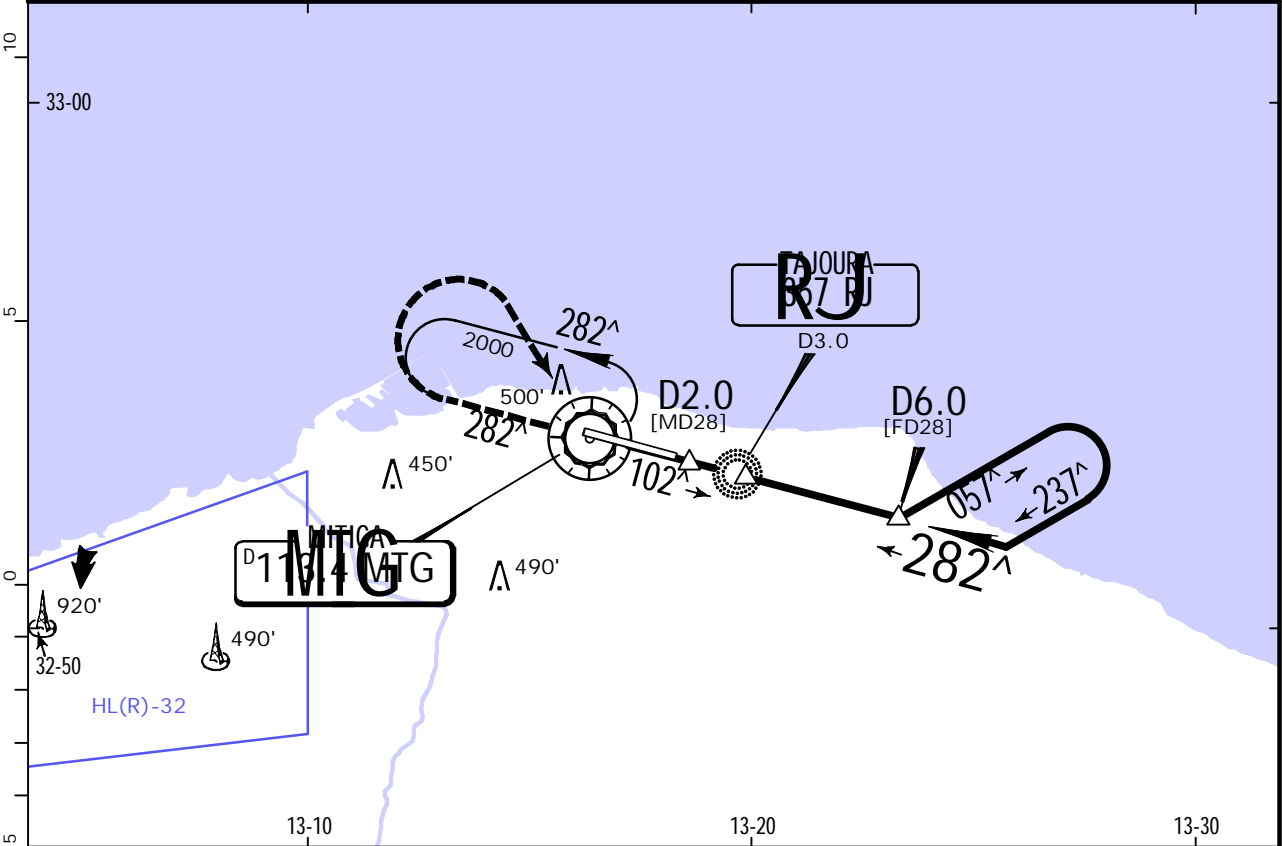
HLLM/MJI
MITIGA INTL

JEPPESSEN
29 SEP 23 (23-2) .Eff.5.Oct.

TRIPOLI, LIBYA
VOR DME Rwy 28

BRIEFING STRIP™

* ATIS 126.4		* MITIGA Approach 126.3		MITIGA Tower 126.3		* Ground 121.9					
VOR MTG 113.4		Final Apch Crs 282^		VOR DME D6.0 1500' (1470') Lctr VOR or VOR No FAF		VOR DME MDA(H) 500' (470') Lctr VOR or VOR MDA(H) (CONDITIONAL) 550' (520')		Apt Elev 30'			
MISSED APCH: Climb STRAIGHT AHEAD to 1500', then climbing turn RIGHT to 2000' direct to VOR and hold.										MSA MTG VOR	
Alt Set: hPa			Apt Elev: 1 hPa			Trans level: FL 70			Trans alt: 5000'		
Procedure restricted to MAX 210 KT.											



Gnd speed-Kts	70	90	100	120	140	160	ALS PAPI-L	1500'	2000'	MTG 113.4
VOR DME: Descent Angle	3.09^	383	492	547	656	765		↑	RT	
VOR DME: MAP at D2.0										
Lctr VOR or VOR: MAP at VOR										

PANS OPS	STRAIGHT-IN LANDING			CIRCLE-TO-LAND		
	VOR DME CDEA 1 DA/MDA(H) 500' (470')	Lctr VOR CDEA 1 DA/MDA(H) 550' (520')	VOR CDEA 1 DA/MDA(H) 600' (570')	Not authorized South of airport		
	ALS out	ALS out	ALS out	Max Kts	MDA(H)	
	A	R1500m	R1500m	100	1000' (970')	V1500m
	B	R1500m	R1500m	135	1000' (970')	V1600m
C	R2200m	R2400m	R2400m	180	1000' (970')	V2400m
				205	1000' (970')	V3600m

1 VNAV DA(H) in lieu of MDA(H) depends on operator policy.